

How to configure the xda for GPRS / CSD

These are the settings that you would need to ask from the operators regarding the configurations of the GPRS/CSD.

1. GPRS

1. Name for the settings
2. Name for the connections
3. Modem type
4. Baud rate
5. IP address
6. If required, tick the boxes of :
 - a. Use software compression
 - b. Use IP header compression
7. Server address for DNS, Alt DNS, WINS, Alt DNS
8. Access point name
9. If proxy settings are required, look at “3. Proxy Settings”

2. CSD

1. Name for the settings
2. Name for the connections
3. Modem type
4. Baud rate
5. Selections for “Data bits, Parity, Stop bits and Flow Control” and if required, tick the boxes for:
 - a. Use terminal before connecting
 - b. Use terminal after connecting
 - c. Enter dialling commands manually
6. IP address and if required, tick the boxes for :
 - a. Use slip
 - b. Use software compression
 - c. Use IP header compression
7. Server address for DNS, Alt DNS, WINS and Alt WINS
8. Country code, Area Code and Phone Number
9. If proxy settings are required, look at “3. Proxy Settings”

3. For Proxy Settings

1. If required, tick the boxes for
 - a. This network connects to the Internet
 - b. This network uses a proxy server to connect to the Internet
2. If required, enter in the “proxy server”
3. If “proxy server” is entered, enter in the server address and port number for HTTP, WAP and Socks.

1. Click on Start
2. Select Settings

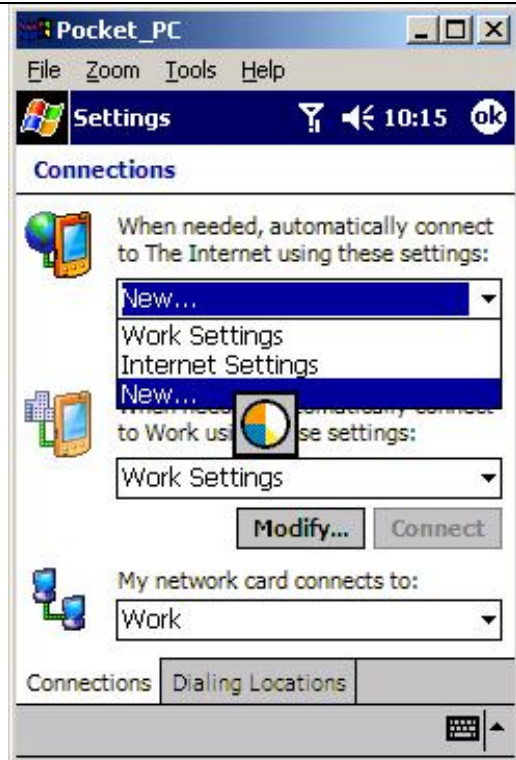


1. Click on 'Connections' tab
2. Select Connections



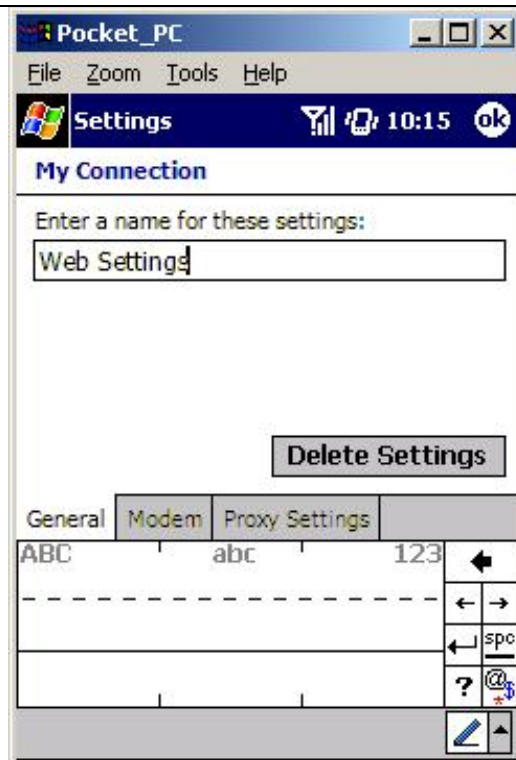
Under ‘When needed, automatically connect to the Internet using these settings:’

1. Select New...



Under ‘Enter a name for these settings:’

1. Enter a name for the settings.
i.e. ‘Web Settings’
2. Click on ‘Modem’ tab



1. Select New...



For GPRS

Under 'Enter a name for the connection:'

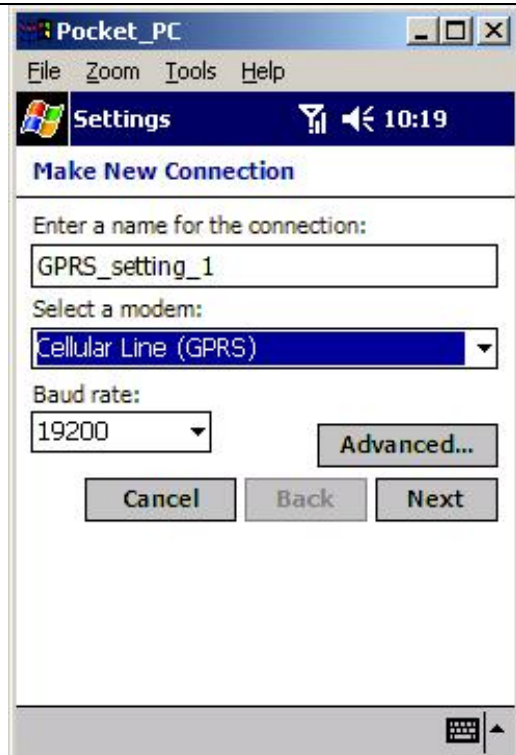
1. Enter a name.
i.e. 'GPRS_setting_1'

Under 'Select a modem:'

1. Choose 'Cellular Line (GPRS)'

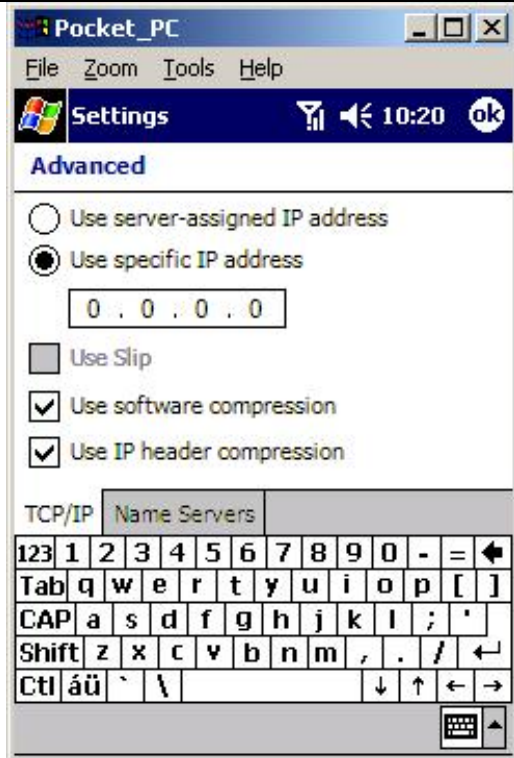
Under 'Baud rate:'

1. Choose '19200'
2. Click on 'Advanced...'



If required, under ‘Use specific IP address’

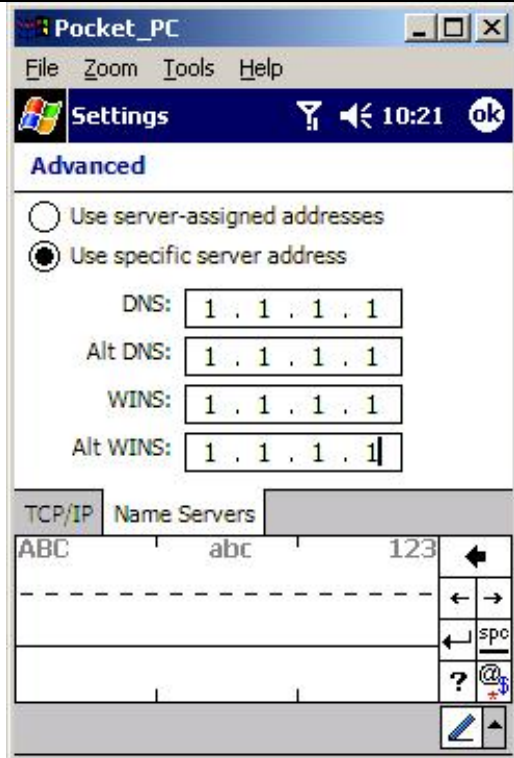
1. Enter ‘IP address’
2. Click on ‘Name Servers’ tab



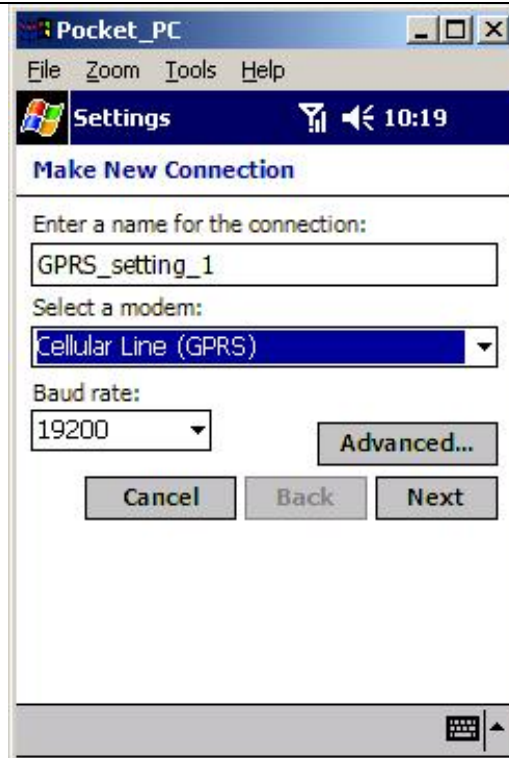
If required, under ‘Use specific server address’

1. Enter ‘server address’
2. Click ‘ok’

Note: normally it is not necessary unless the operator assigns it to you.

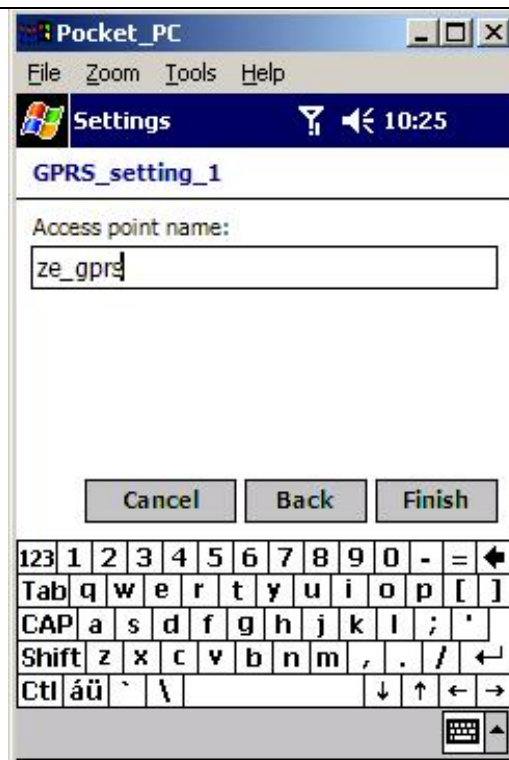


1. Click on 'Next'



Under 'Access point name:'

1. Enter the access point name provided by the operator. i.e. 'ze_gprs'
2. Click on 'Finish'



1. Settings for GPRS are done!
2. To add in settings for CSD, click on 'New...'



For CSD

Under 'Enter a name for the connection:'

1. Enter a name. i.e. 'CSD_setting'

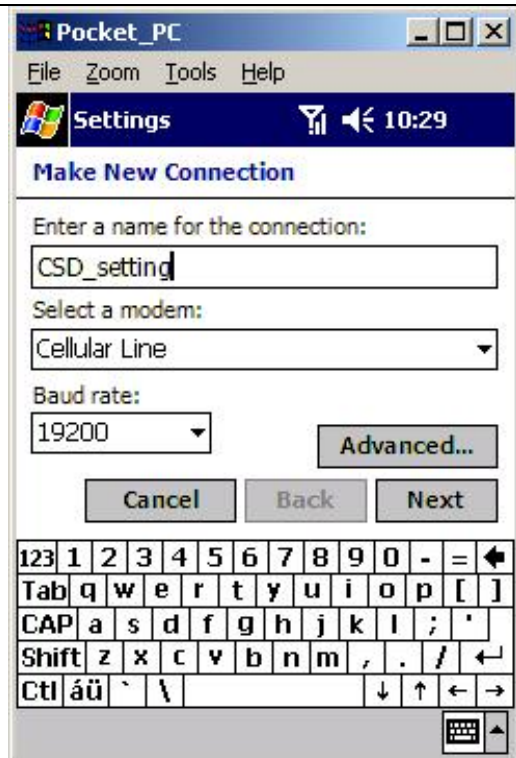
Under 'Select a modem:'

2. Choose 'Cellular Line'

Under 'Baud rate:'

3. Choose '19200'

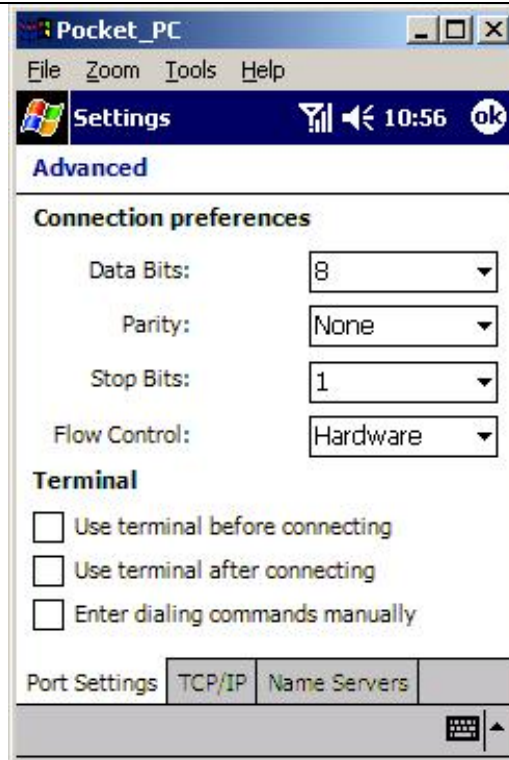
Click on 'Advanced'



If required, under ‘Connection preference’

1. Choose the data bits, parity, stop bits and flow control.
2. Tick the required boxes
3. Click on ‘TCP/IP’ tab

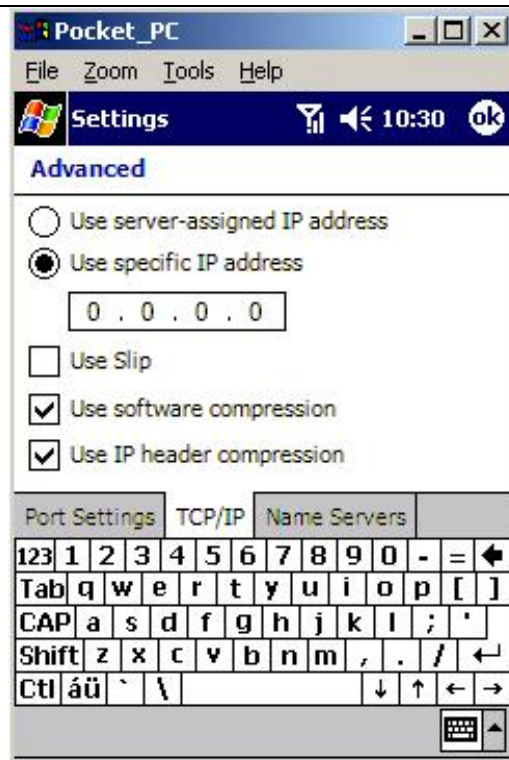
Note: normally it is not necessary unless the operator assigns it to you.



If required, under ‘Use specific IP address’

1. Enter in the IP address
2. Tick the required boxes
3. Click on ‘Name Servers’ tab

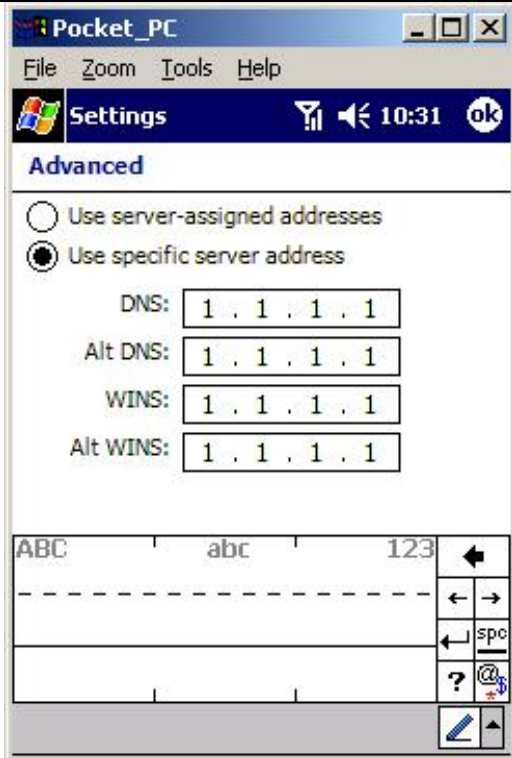
Note: normally it is not necessary unless the operator assigns it to you.



If required, under ‘Use specific server address’

1. Enter in the server address
2. Click ok

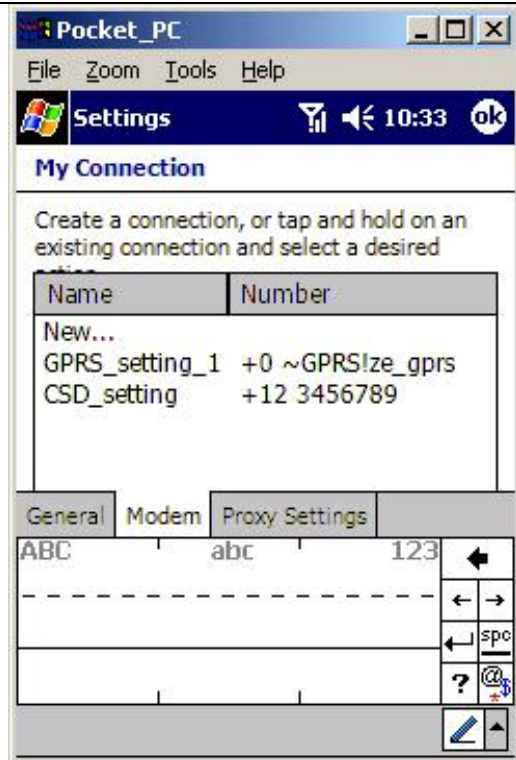
Note: Normally, ‘DNS’ and ‘WINS’ is filled in instead of ‘Alt DNS’ and ‘Alt WINS’. Usually, it is not necessary to fill in the server address unless the operator assigns it to you.



1. Enter the ‘Country code’
2. Enter the ‘Area code’
3. Enter the ‘Phone number’
4. Click on ‘Finish’



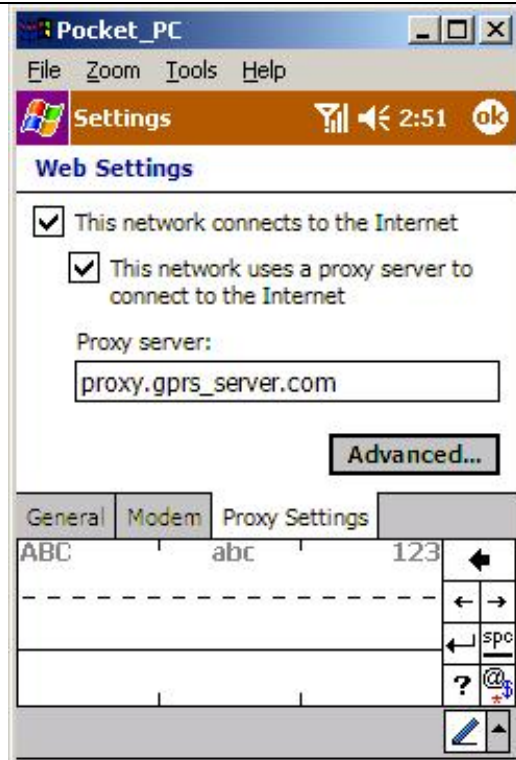
1. Settings for CSD are done!
2. Click on 'Proxy Settings' tab



If required,

1. Tick the required boxes
2. Enter Settings for 'Proxy server' i.e. 'proxy.gprs_server.com'
3. Click 'Advanced...'

Note: normally it is not necessary unless the operator assigns it to you.

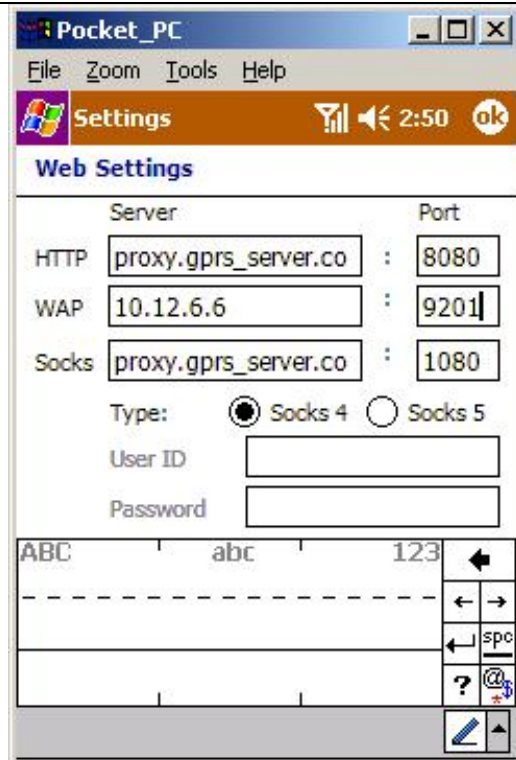


If 'Proxy Server' was filled just now, the settings would be brought forward to 'HTTP' and 'Socks'

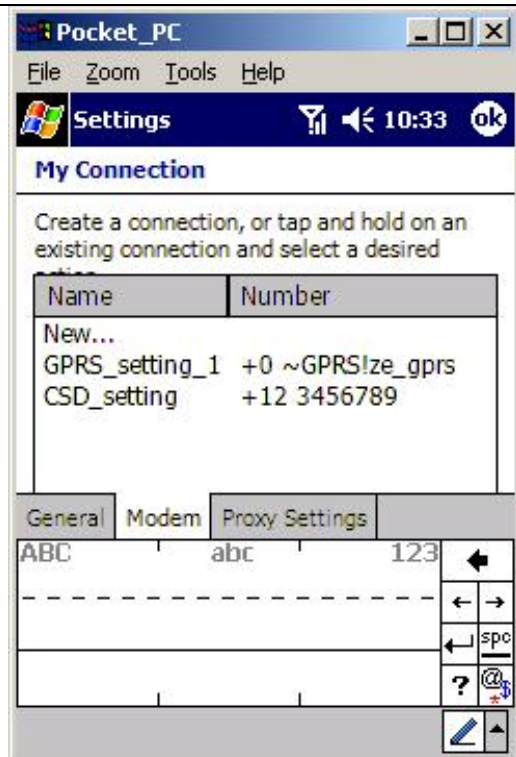
If required,

1. Enter Settings for WAP
2. Click ok

Note: normally it is not necessary unless the operator assigns it to you.



1. Settings for both GPRS and CSD are done.
2. Click 'ok'



1. From here, we can see that the configurations for 'Web Settings' are done.
2. We can start using this settings for surfing the web

