

CTM network settings for xda

For Macau Only

Step-by-step guide to connection settings for CTM

[A. Create an CTM connection settings group](#)

[B. Connection Settings for CTM CSD Dial-up access to WAP](#)

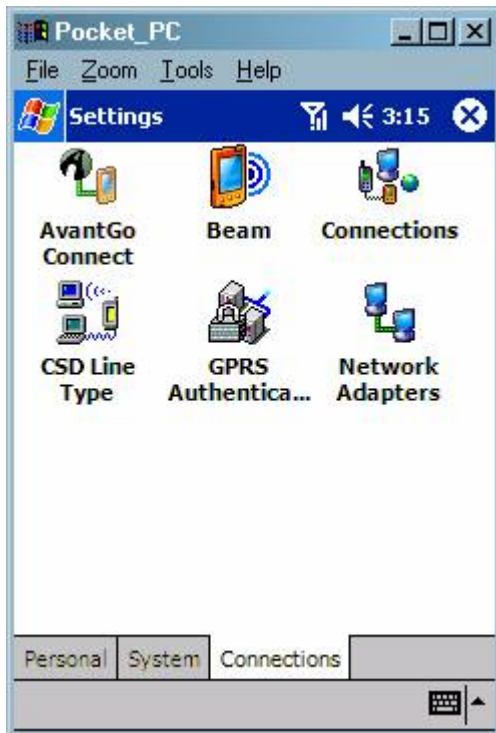
[C. Connection Settings for CTM GPRS access to WEB/WAP](#)

A. Create an CTM connection settings group

1. Tap "Start"
2. Select "Settings"



3. There are 3 tabs on the Settings page, select the "Connections" tab and tap the "Connections" icon.



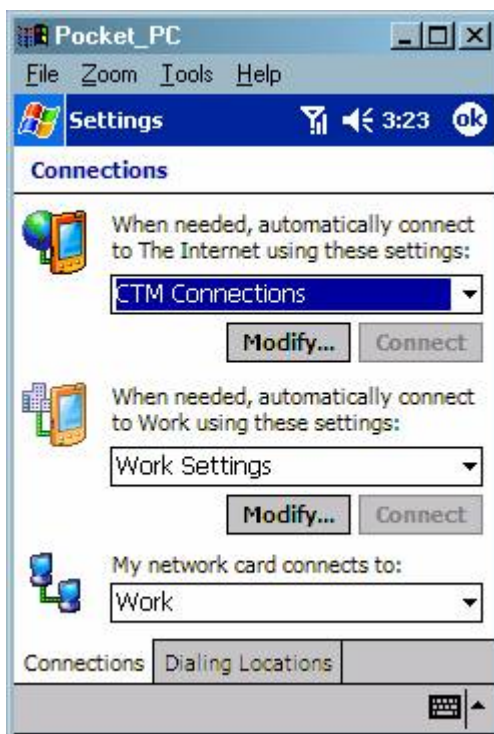
4. Select "New" from the pull down box of "When needed, automatically connect to The Internet using these settings:"



5. There are 3 tabs on this page. In the "General" tab, enter the name of this setting e.g. "CTM Connections". Then tap "OK"

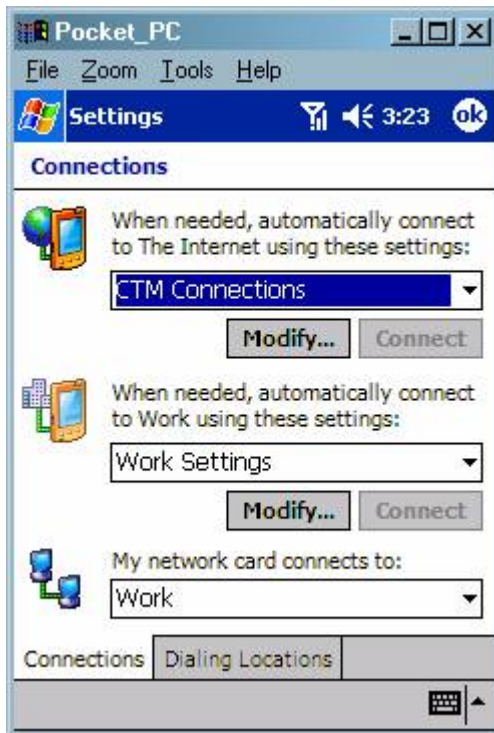


6. You are back to the page in step 4. Now the "CTM Connections" is created.

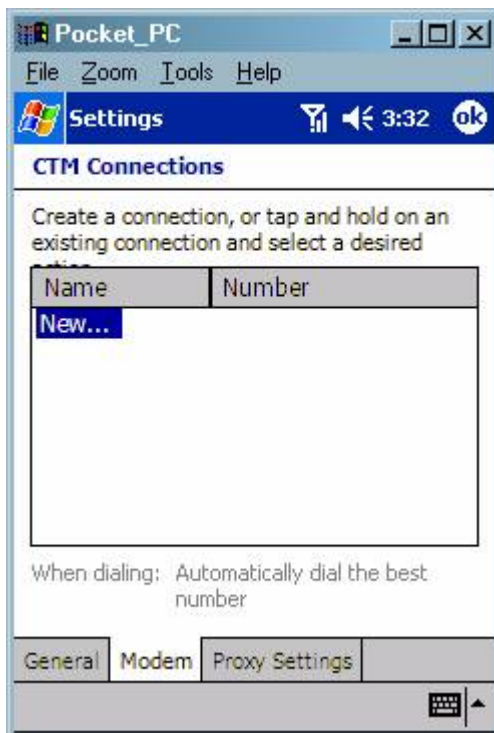


B. Connection Settings for CTM CSD Dial-up access to WAP

1. Tap the "Modify" button in the last screen of Section A to create new connection setting.

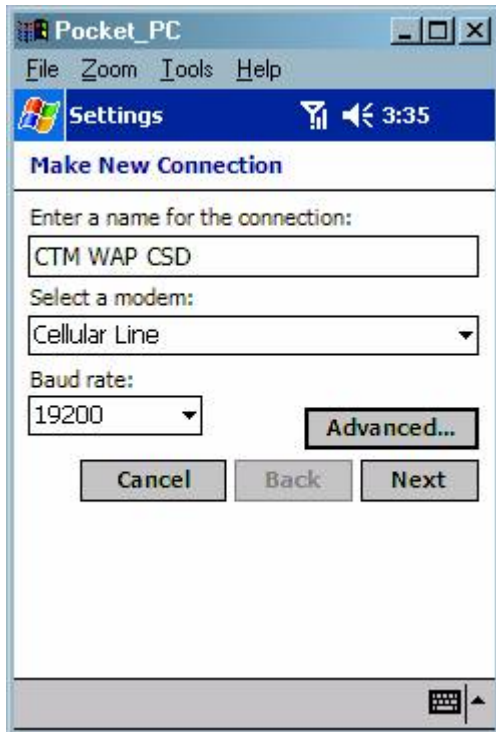


2. Tap "New"



3. Enter Connection name e.g. "CTM WAP CSD"

4. Select "Cellular Line" from the "Select a modem" drop down box
5. Select "19200" from the "Baud rate"
6. Tap "Next"

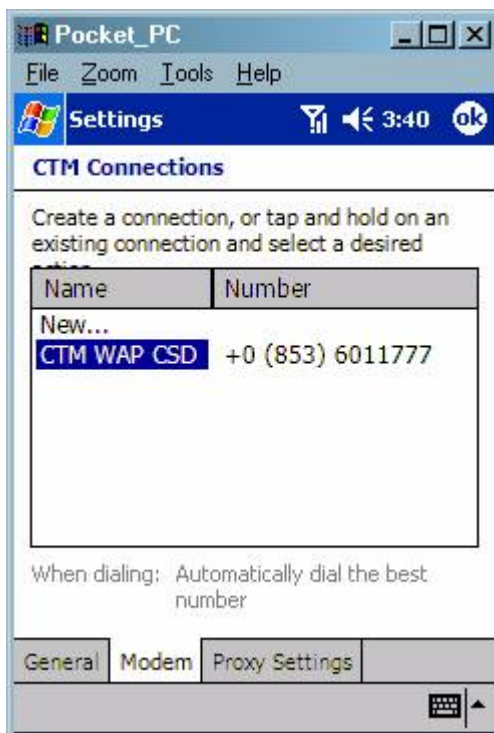


7. Enter Area code "853" and Phone number "6011777"



8. Tap "Finish"

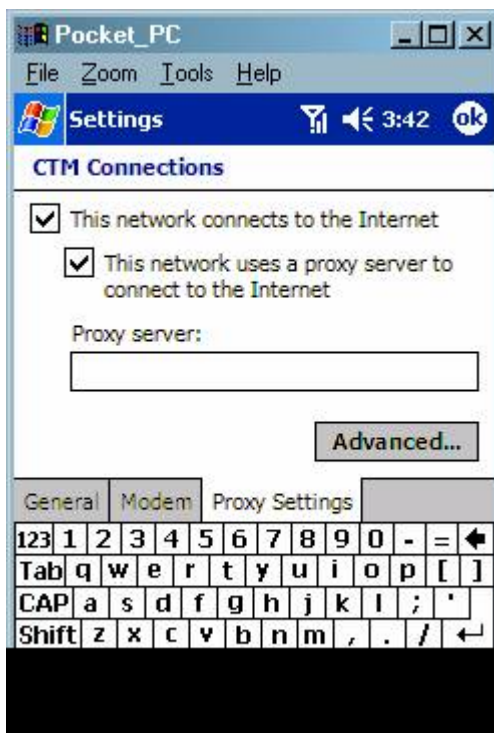
9. It will back to follow page. Select the tab "Proxy Settings"



10. Tick the "This network connects to internet"

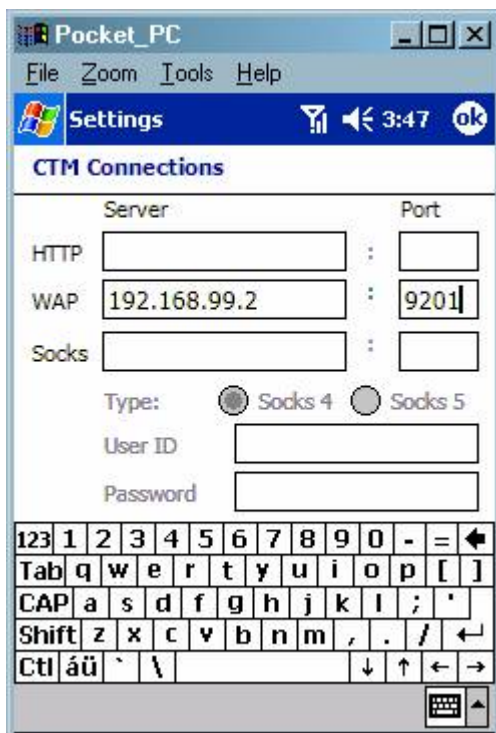
11. Tick the "This network uses a proxy server to connect to the internet"

12. Leave the "Proxy Server:" entry box blank



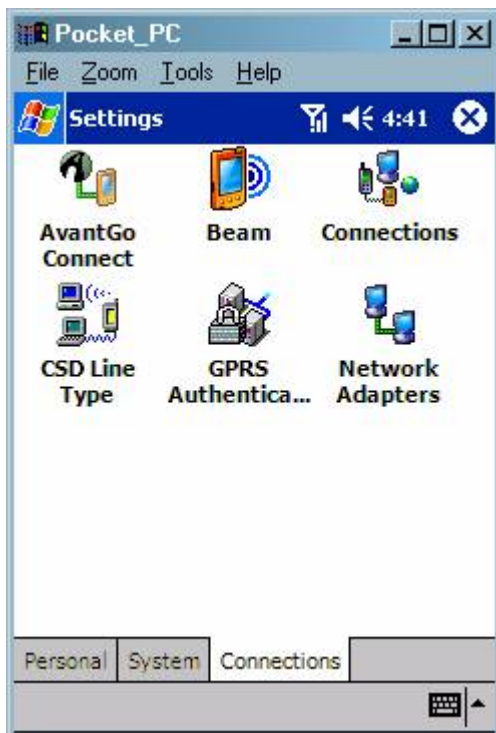
13. Tap "Advanced..."

14. Enter WAP Server "192.168.99.2" and Port "9201"

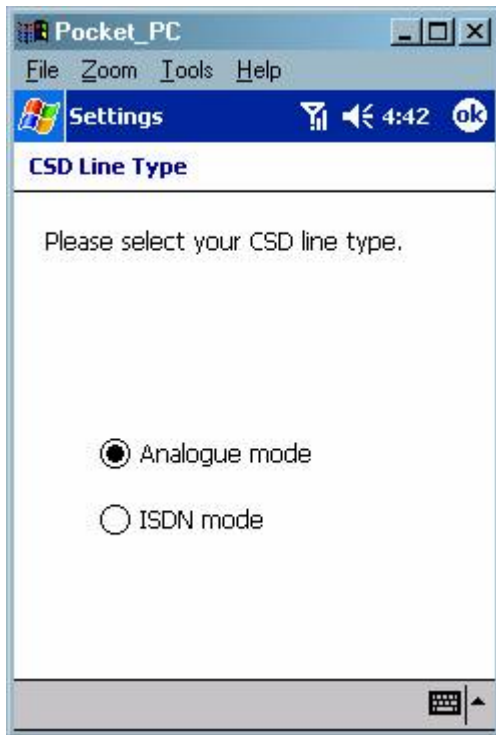


15. Tap "OK" to return the last page and tap "OK"

16. You will back to the following page. Tap "CSD Line Type"



17. Tick the "Analogue mode" and Tap "OK"



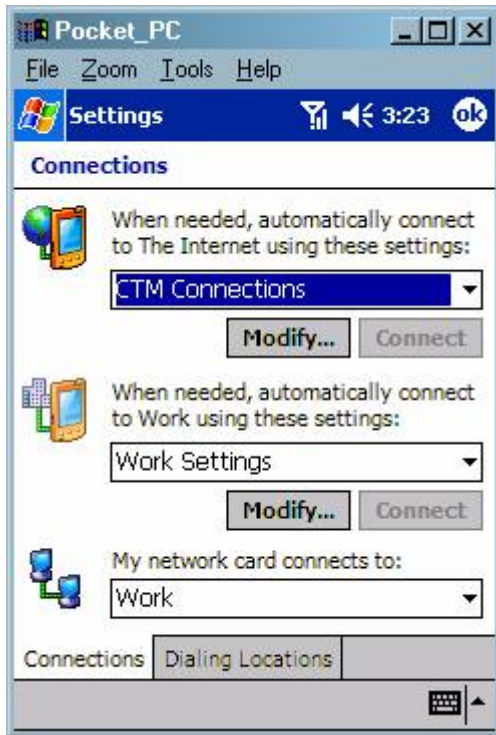
The CTM CSD WAP setting is complete.

TIPS: To access WAP pages, you will need to key in `wsp://` instead of `http://`,
For example: `wsp://wap.yahoo.com`

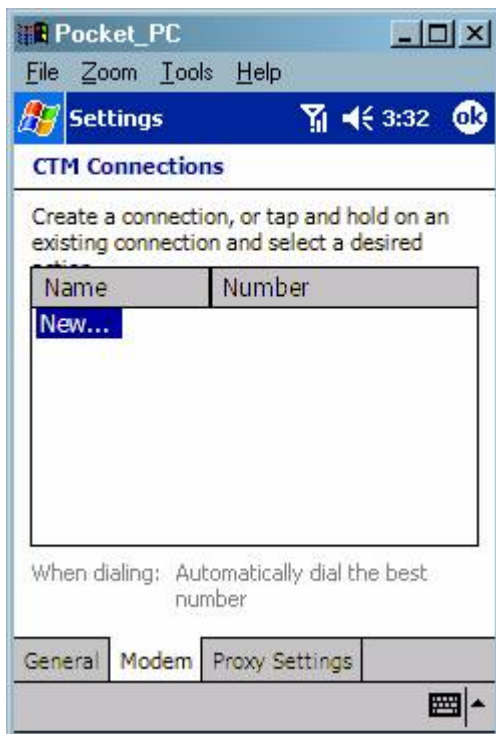
C. Connection Settings for CTM GPRS access to WEB/WAP

After you finish the section A.

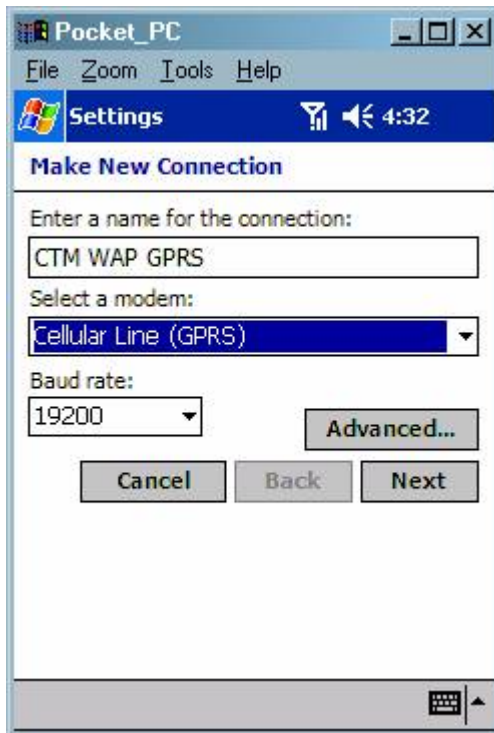
1. Tap the "Modify" button in the last screen of Section A to create new connection setting.



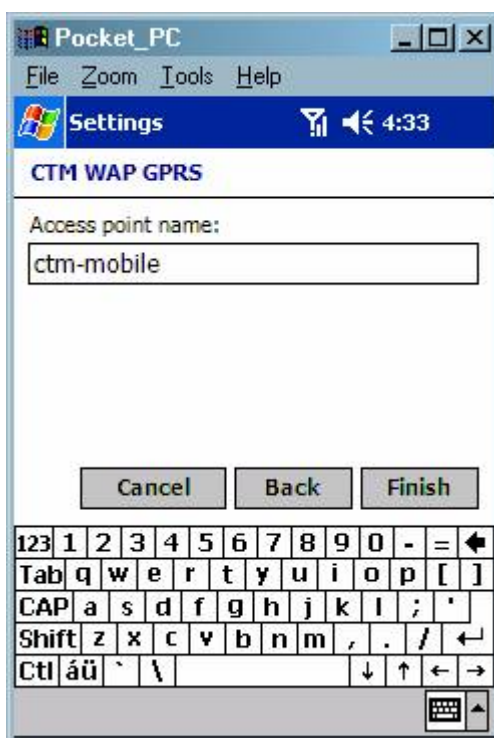
2. Tap "New"



3. Enter Connection name e.g. "CTM WAP GPRS"
4. Select "Cellular Line (GPRS)" from the "Select a modem" drop down box
5. Select "19200" from the "Baud rate".
6. Tap "Next"



7. Enter "ctm-mobile" in Access Point Name entry



8. Tap "Finish"

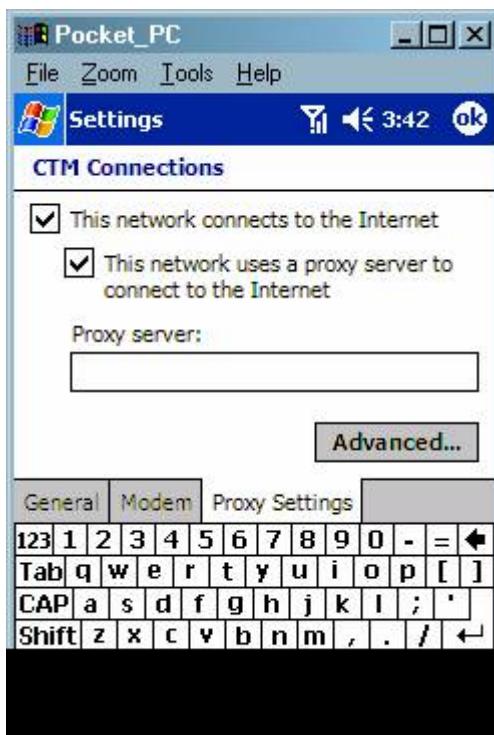
9. It will back to follow page. Select the tab "Proxy Settings"



10. Tick the "This network connects to internet"

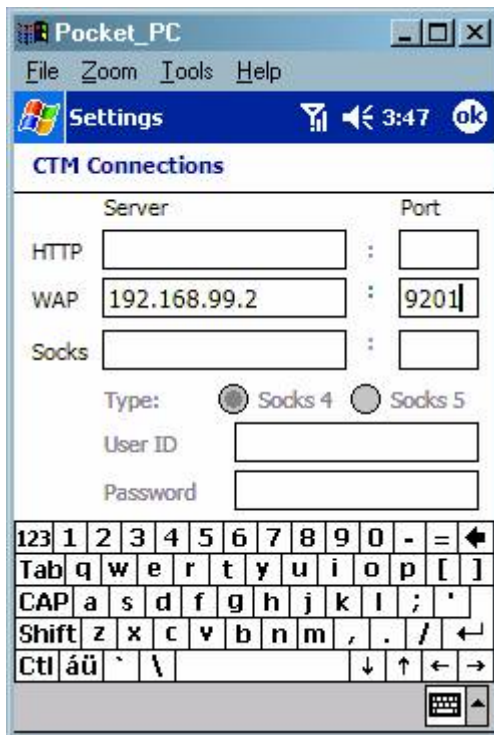
11. Tick the "This network uses a proxy server to connect to the internet"

12. Leave the "Proxy Server:" entry box blank.



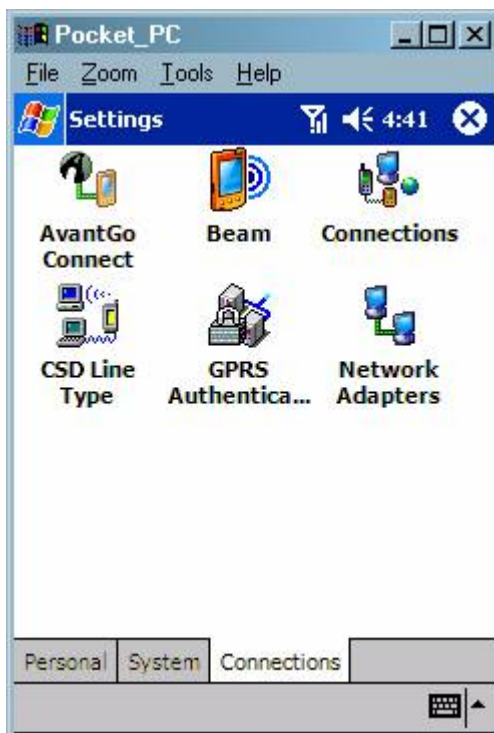
13. Tap "Advanced..."

14. Enter WAP Server "192.168.99.2" and Port "9201"



15. Tap "OK" to return the last page and tap "OK"

16. You will back to the following page. Tap "GPRS Authentication"



17. Tick "CHAP authentication" and tap "OK".



The CTM GPRS setting is complete.